

O&O Enterprise Management Console 5 Admin Edition



The central management for your network

Some software programs can only be managed with difficulty in the network. You need a lot of valuable time, as well as allow for long intro and service times. The O&O Enterprise Management Console minimizes the workload on the IT infrastructure in your company, which allows you to fully concentrate on your core business.

Save money and labor

Now you are able to manage your O&O programs from one central location in the network. The O&O Enterprise Management Console enables you to install O&O programs remotely; in addition, you can also distribute jobs onto individual clients and sites. All events are logged in detailed reports and stored in a databank so that you can retrieve information about the job execution status at all times.

New functions

It is now possible to integrate the new O&O Defrag to the current O&O Enterprise Management Console. This enables you to automatically protect your network computers permanently from fragmentation via the advanced computer settings. The automatic monitoring is continuously enabled, and there is no need to create a regular job to do so. You can also create other settings, such as enabling/disabling the O&O Defrag Tray Icons or the maximum use of resources allowed during a defragmentation of each network computer.

The optimized detailed overview of the user interface enables you to find relevant information even quicker, such as of the degree of fragmentation of a network computer, or the time of last defragmentation.

Easy to use

The simple and intuitive user interface is focused on the important functions of network management. The system is up and running in just a few minutes, and you can begin with the remote installations and the job scheduling. O&O Enterprise Management Console will explain each step for managing licenses on the network with the help of tutorials, for creating jobs, and transferring them onto clients. Equally simple is the creation of regular jobs such as daily images. Detailed dialogs support you in entering all important parameters.

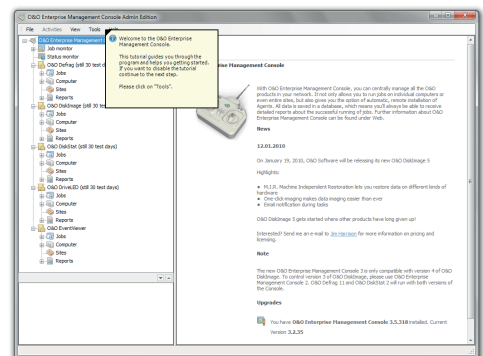
Automatic installation and job execution

The remote installation of O&O products, specifically the installation of „product agents“ is processed for you and your users transparently and automatically. To run a remote installation you need a network-capable O&O program, client licenses, and a user account with administrator privileges appropriate to the clients. Jobs are automatically executed as soon as they are assigned to a computer. If for example a computer is not available at the time of the job distribution, the request is automatically repeated at scheduled intervals.

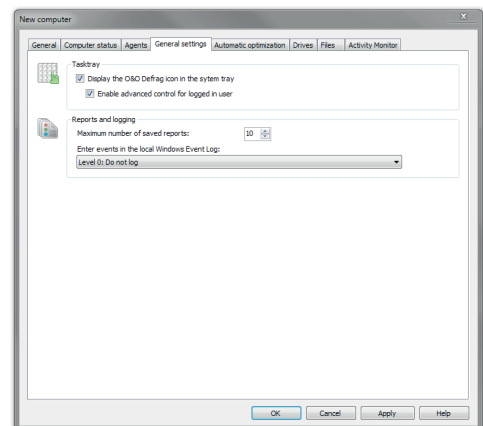


General Communication Model

1. Workstation with O&O Enterprise Management Console
2. SQL-Server
3. Clients

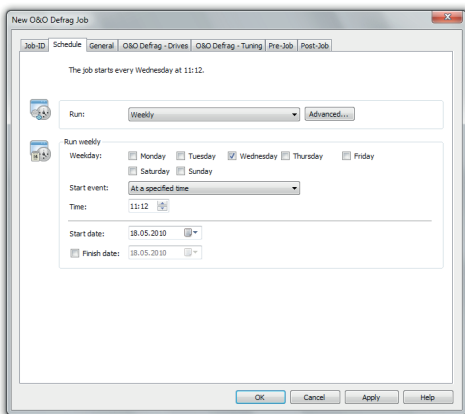


Startpage O&O Enterprise Management Console

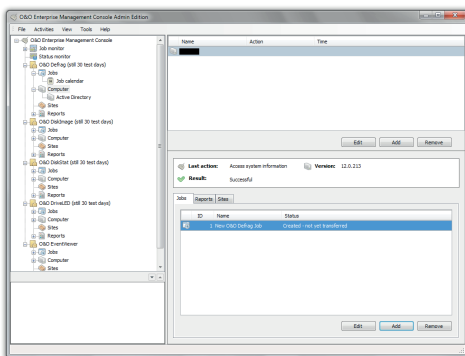


Computer settings for O&O Defrag

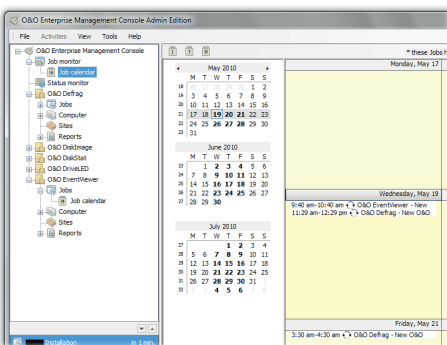
O&O Enterprise Management Console 5 Admin Edition



Create a schedule for a job



Assign job to computer



Job calendar

Scalable structure

The modular design of the O&O Enterprise Management Console adapts itself to your specific needs, requirements and company size. As a longstanding Microsoft Gold Certified Partner, all our products are designed to be Windows-compatible, to ensure maximum security for your system and your data. In order to provide central storage of all your information while using the O&O Enterprise Management Console, we rely on the Microsoft SQL Server, to guarantee high flexibility and scalability for companies of any size. The basic version of the O&O Enterprise Management Console includes the pre-configured Microsoft SQL Server 2014 upon delivery. The connection or the switch to more extensive versions of the SQL server is possible at all times and can be initiated with the help of an Assistant.

Continuous and secure communication

The communication between the server components and the clients can be encrypted using SSL if desired, so that attacks on data are blocked both internally and externally. This and other security components guarantee a maximum of access security with minimal administrative burdens. The integrated active components also guarantee the permanent synchronization of jobs and reports across the network. You will also be notified of new program versions. At a glance, you can see which O&O programs are installed on which computer. As a result, you always have an overview of all the processes in your IT environment.

O&O Programs that can be integrated

You can manage the following O&O programs in their current versions using the O&O Enterprise Management Console across a network:

- O&O Defrag maximum performance for your computer
- O&O DiskImage image and restore your data
- O&O DiskStat easy identification of space wasters
- O&O DriveLED early warning of an impending hard disk crash
- O&O EventViewer identifies and logs sources of error on hardware and software.

Please bear in mind that only the Workstation and the Server Editions include an interface to the O&O Enterprise Management Console.

O&O Enterprise Management Console 5 Admin Edition



Made in Germany. Made in Berlin.

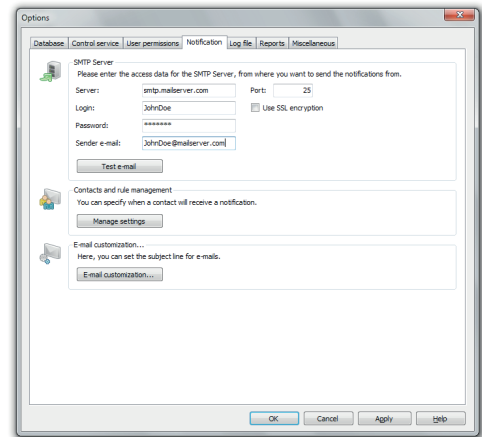
All O&O products are developed and serviced in Berlin. We at O&O are proud of our German heritage, and proud to represent the quality, security and satisfaction long associated with products "Made in Germany". We take the concerns of our customers very seriously because we know just how important their data is for them. For further information, please visit our website: www.oo-software.com

Product Features

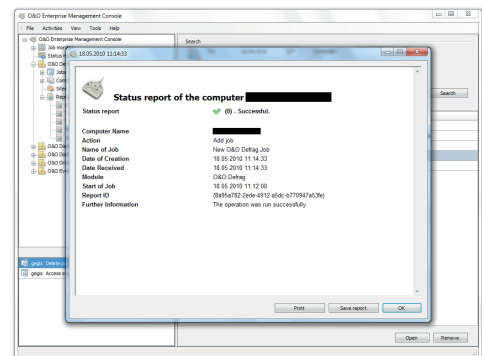
- ↳ Step-by-step assistant for easy initial setup
- ↳ Advanced report management: versatile search function and definable retention time
- ↳ Central management for creating and distributing jobs across a network
- ↳ Remote installation of O&O products across a network
- ↳ Elaborate job assistant with options for creating individual settings
- ↳ Run Batch jobs before and after a job
- ↳ Synchronization of reports as a result of constant communication between clients and the SQL Server
- ↳ SSL Encryption (optional)

System Requirements

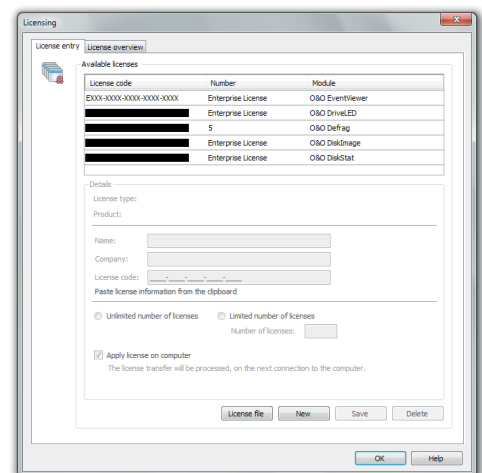
- ↳ The requirements of the respective operating system
- ↳ Minimum 1 GB RAM recommended
- ↳ Ca. 1 GB free hard disk space for the entire package (SQL Server 2014 and OOEMC)
- ↳ 64-bit support
- ↳ Windows® 7 till Windows® Server 2012 R2 (all Editions)
- ↳ Active Directory



Settings for notification



Status report



Licensing