

O&O DiskRecovery 14

Admin Edition



Company wide data recovery with just one license

O&O DiskRecovery provides fast help, if you or other employees have deleted data by accident or due to a system crash. With its unique combination of three different search and recovery algorithms O&O DiskRecovery detects all recoverable data. With the help of O&O DiskRecovery you will be able to save your data, no matter if files were just simply deleted, disks formatted, or file systems destroyed. Retrieving data with O&O DiskRecovery can save valuable time that re-entering data would cost - if possible at all.

O&O DiskRecovery in an emergency

A data recovery with the O&O DiskRecovery Instant Installation can be carried out without overwriting important data. Installation is done over a second computer, and the program files are made available on a portable disk or in the network.

Activity scope of the boot medium

If Windows is damaged or does not start at all, you no longer have access to your saved files. Your boot media contains various system rescue tools besides O&O DiskRecovery, which allow you to access the Windows Registry or stored files. You can first try to navigate to the stored data and then copy them to an external drive, e.g. a USB stick. If, on the other hand, you find that your data is also lost, you can start O&O DiskRecovery directly from your boot media and start the recovery of your data.

Licensing

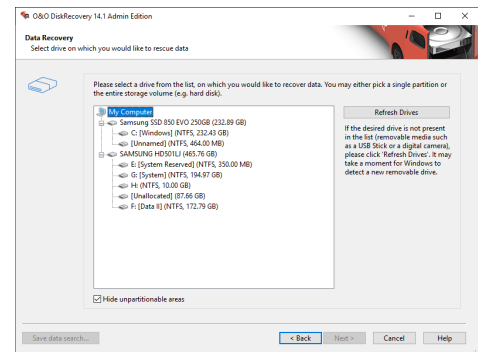
O&O DiskRecovery Admin Edition enables you to recover data on every computer in your company. There are no additional licensing costs. In addition, installing the program on every computer in the company becomes obsolete, since you can start O&O DiskRecovery Admin Edition directly from the boot media or via instant installation from USB stick. a restoration.

Three integrated search algorithms

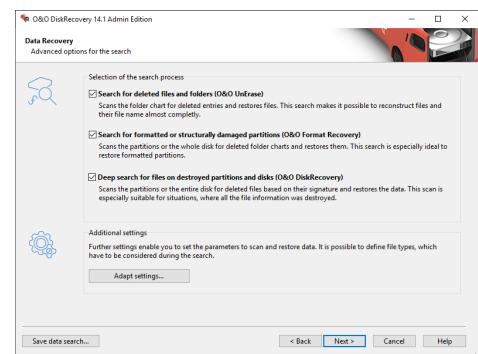
The three integrated search methods use different technologies for data recovery, which complement each other perfectly. For quick searches, you can use the search algorithm of O&O UnErase, which completes a scan for files, even on very large hard drives, in no time. The advanced features of the special search algorithms in O&O FormatRecovery make it possible to find and then ignore defective sectors. This in turn facilitates data recovery on a drive that is damaged yet still accessible. For the sector-based deep scan, we recommend the use of the search algorithms in O&O DiskRecovery.

Preview function

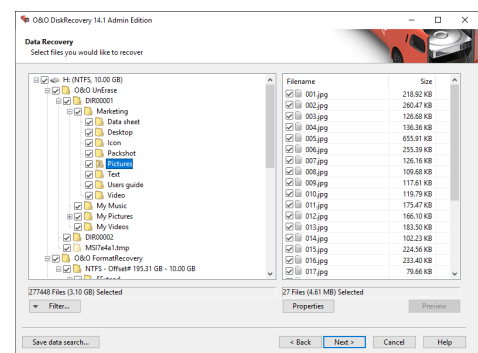
Upon completion of the scanning process, you'll be able to preview the recovered data. O&O DiskRecovery supports various picture and text formats for the preview function, including JPEG, BMP, TIFF, TXT.



Select drive on which you would like to rescue data



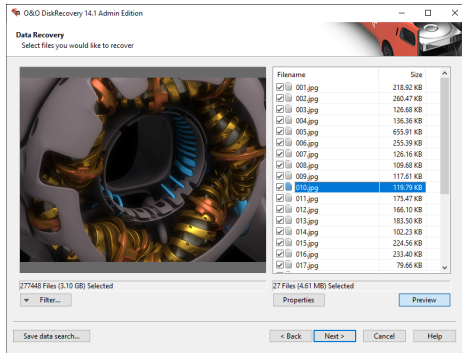
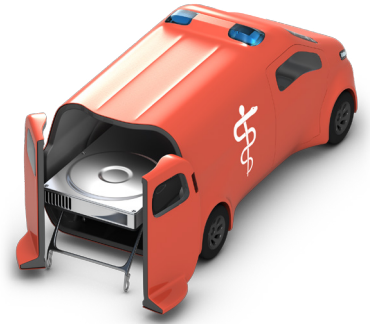
Selection of the search process



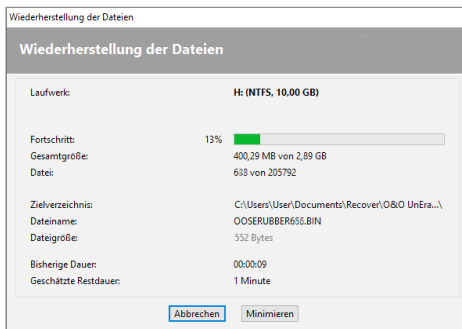
Select files you would like to recover

O&O DiskRecovery 14

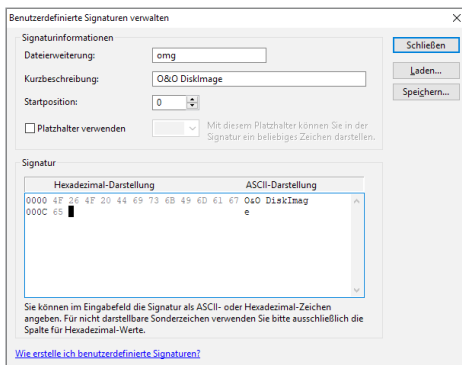
Admin Edition



Preview



Recovering files



User defined signature management

Made in Germany. Made in Berlin.

All O&O products are developed and serviced in Berlin. We take the concerns of our customers very seriously because we know just how important their data is for them. What's more, we've been doing so for over twenty years!

Highlights

- Improved recovery methods
- New file types
- Clearly structured Assistant for the search and restoration of files
- Unlimited number of restorable files
- Three additional, integrated scanning processes:
 - Quick scan for files, even on very large storage volumes (O&O UnErase)
 - Sector based deep scan (O&O DiskRecovery)
 - Scan formatted or structurally damaged partitions (O&O FormatRecovery)
- Easy integration of data images
- Supports over 400 file types and versions
- Preview of files prior to data restoration
- Supports all Windows-compatible hard disks, removable drives, memory cards, USB Sticks, CompactFlash, and most digital cameras
- Fast Instant-Installation possible
- User-defined signatures can be added

System requirements

- System requirements of each operating system needs to be fulfilled
- 32/64-bit
- Windows 7 (all Editions)
- Windows 8 (all Editions)
- Windows 10 (all Editions)
- Windows Server 2008 (all Editions)
- Windows Server 2008 R2 (all Editions)
- Windows Server 2012 (all Editions)
- Windows Server 2012 R2 (all Editions)
- Windows Server 2016 (all Editions)
- Windows Server 2019 (all Editions)