

# O&O DiskImage 20 Server Edition



## GDPR-compliant data backup for businesses and IT Service Providers

Data backup is indispensable for any company. Data loss doesn't just affect customer and business data—it can also harm long-term business relationships, leading to severe consequences for the entire enterprise. IT departments are under significant pressure to ensure smooth operations around the clock.

### Comprehensive VHD / VHDX functionality

With O&O DiskImage Server, you can now create virtual images in the Microsoft Virtual Hard Disk format (VHDX and VHD). This is particularly useful for testing migrations from Windows 10 to Windows 11 in a virtual environment beforehand.

Additionally, incremental and differential backups of virtual drives can be created. These images can be combined or mounted, enabling access to required files in just seconds. This allows users to continue working without any data loss or interruptions.

### O&O DiskImage with its own recovery partition

O&O DiskImage stores the recovery environment directly on the computer. In the event of a system failure, the system can be booted directly from this partition, including the last system image.

Thanks to system integration, the O&O DiskImage RecoveryPartition can be accessed immediately, enabling a direct restoration of the most recent system image. If Windows doesn't start or faulty drivers need to be removed, the integrated recovery environment provides all O&O tools necessary to quickly restore system functionality.

### O&O DiskImage ToGo

Previously, two storage media were required: a USB stick for the O&O DiskImage boot medium and a USB hard drive for backups. Now, one storage medium is enough! Simple, fast, and without searching—you are always ready to restore your system!

### Protection against sabotage

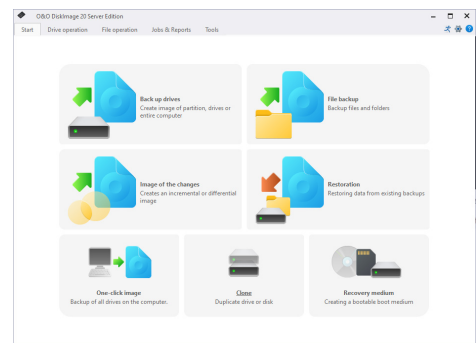
Every day, malicious software attacks company networks, infects devices, and systematically destroys data. These attacks are often discovered too late, resulting in irretrievable data loss. O&O DiskImage offers powerful mechanisms to instantly restore individual files or entire systems—quickly and reliably.

### Command line function

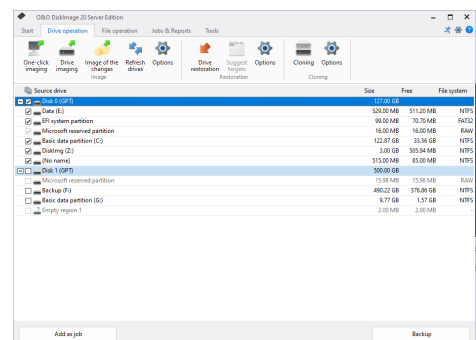
The new command line function in O&O DiskImage simplifies the management of batch files and automated applications, making backup administration even more efficient—perfect for companies with high demands.

### Images and file backups

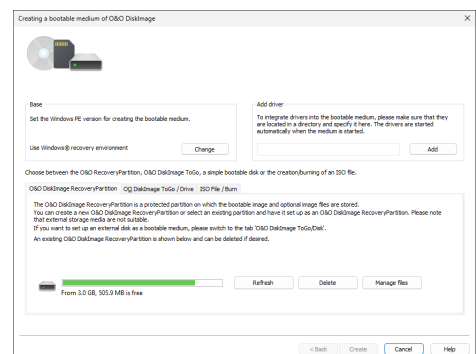
O&O DiskImage offers a variety of options for creating backups. You can choose between images (system images) and file backups. With images you can restore a system 1:1. With a file backup, you backup selected files and directories which you can then access again later.



Startpage: O&O DiskImage



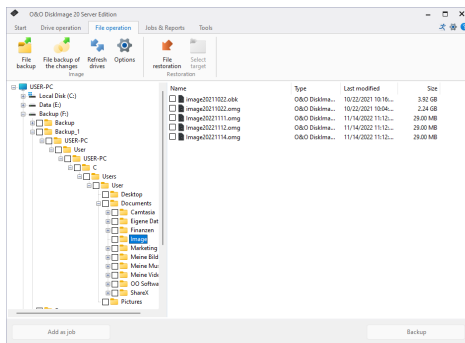
Select drive for imaging



O&O DiskImage RecoveryPartition

# O&O DiskImage 20

## Server Edition



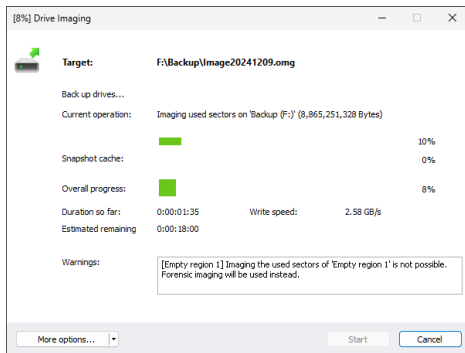
File Backup

### File Backup

O&O DiskImage enables the backup and restoration of individual files and folders. Compared to a drive image, the file backup doesn't store drive information.

### M.I.R. - Machine Independent Restoration

The Machine Independent Restoration enables a system restoration onto machines with different hardware setups. This means a system image or a clone cannot only be restored onto Server and Desktop PCs with identical hardware, but also onto hardware where the processor or motherboard has been changed, for instance.



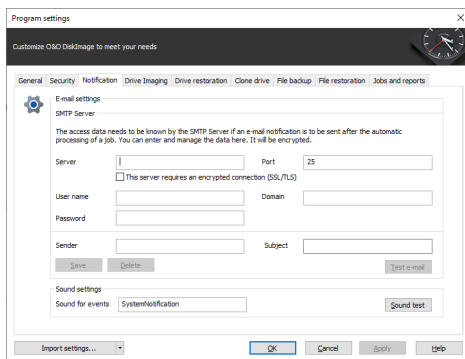
Imaging process (empty snapshot cache)

### Imaging with no downtime

O&O DiskImage Server Edition includes a mechanism, which ensures that the imaged data corresponds exactly to the moment of the begin of the imaging process: changes to the data set by the user or applications will not influence a running imaging process. The existing file system and the application environment have therefore no influence on the process. Only by harnessing this technology can consistent system images be created, while at the same time ensuring that the system runs without interruption, and remains continuously available.

### Specially designed for server environments

O&O DiskImage Server Edition was specifically designed to make the most modern systems more efficient, without unnecessarily straining older hardware due to a high resource use. O&O DiskImage Server Edition fully supports 64 bit server operating systems, dynamic data volumes, and of course fail-safe RAID configuration.



Notification - E-mail settings

### Automation, scripting and reporting

A comprehensively configurable time control enables you to comfortably create automated images with O&O DiskImage. In addition, O&O DiskImage Server Edition can be controlled completely over script commands. Detailed reports are then compiled, informing you as to the results of every procedure or activity.

### Choice of various types of images

O&O DiskImage lets you perform full and differential/incremental imagings. Full imaging allows you to choose between a space-saving image of used sectors and an all-inclusive forensic imaging which can be used when restoring data - for example, in conjunction with O&O DiskRecovery. An image of the changes lets save you space, as you image only those data sectors which have changed since the last imaging procedure. All important composition information is saved in every image file. Even when single image files are lost, you can still carry out a partial data restoration of data that is still available.

# O&O DiskImage 20

## Server Edition



### ISO file can be mounted as virtual drive

You have the possibility to mount an ISO file as a drive. The ISO file is treated as a separate drive. You can view and use its contents using Windows Explorer. This can be of help, when you download an ISO file for a program installation. Instead of first burning the ISO file on a CD, to run the installation, you can now simply mount ISO file as a drive using O&O DiskImage, start the setup and run the installation.

### Splitting Images

Images can be split into several files. For example, you can limit the size of an image to a maximum of 700 MB. An image of your drive can then be composed of several image files of each up to 700 MB. An automatic split is also possible, if for example the target drive is full or the maximum file size of the file system has been reached.

### Virtual hard disks (VHD)

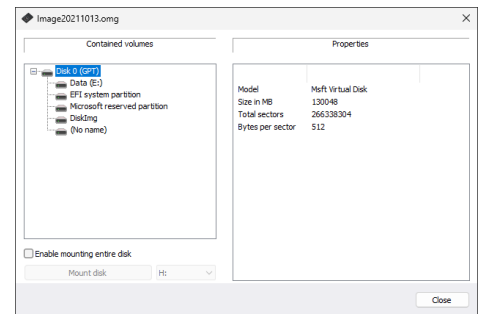
To make working with Microsoft Virtual PCs (VPC) easier, you can convert images to virtual drives (VHD). The converted image can then be mounted as a virtual drive on the VPC, with no need for installing O&O DiskImage there. Similarly, virtual hard disks (VHD) can be converted to Images (OMG).

### E-mail notification on activity status

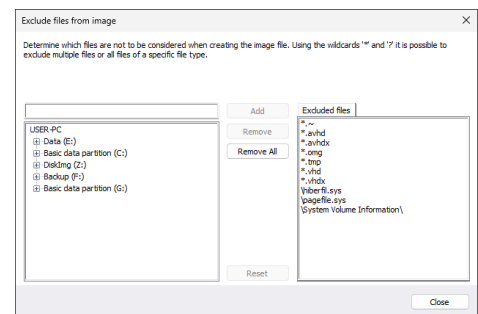
The e-mail notification function is an option you can select to be kept informed of the progress of jobs or activities. You will also be notified of any errors so that you can act quickly to resolve them.

### Made in Germany. Made in Berlin.

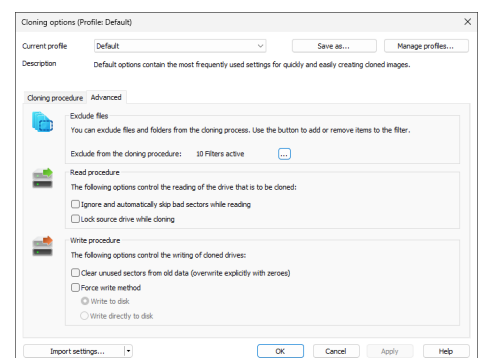
All O&O products are developed and serviced in Berlin. We at O&O are proud of our German heritage, and proud to represent the quality, security and satisfaction long associated with products "Made in Germany". We take the concerns of our customers very seriously because we know just how important their data is for them. For further information, please visit our website: [www.oo-software.com](http://www.oo-software.com)



Mount drive



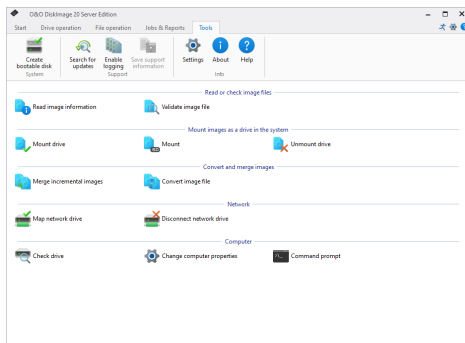
Exclude files from imaging



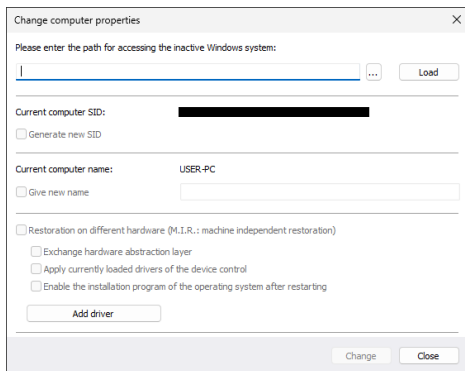
Cloning options

# O&O DiskImage 20

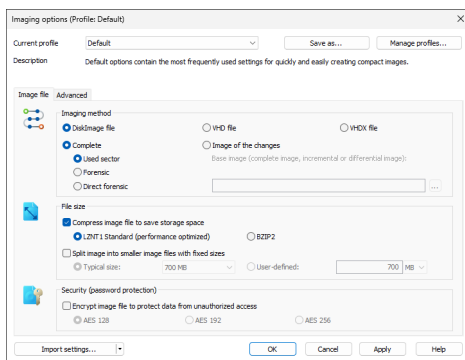
## Server Edition



Tools



Change computer properties



Imaging options

### Highlights

- ♥ Comprehensive VHD / VHDX functionality
- ♥ O&O DiskImage now supports Windows 11
- ♥ O&O DiskImage RecoveryPartition
- ♥ O&O DiskImage ToGo - turns an external hard drive into a rescue medium
- ♥ Backup servers/PCs with the push of a button or automatically
- ♥ Helps with the virtualization of your IT
- ♥ Migration to new systems
- ♥ Strong encryption
- ♥ Backup without downtime
- ♥ Automation, scripting, and reporting

### Imaging Features

- ♥ Image an entire computer with the push of a button
- ♥ Image system and data drives
- ♥ Clone drives and entire disks
- ♥ File backup: image and restore individual files and/or folders
- ♥ Image only used sectors
- ♥ Incremental/differential images: backup only the changes
- ♥ Forensic and Direct Forensic images
- ♥ Save images to network drives
- ♥ Time Schedule for automatic, regular images
- ♥ Advanced burning on CD/DVD/Blu-ray
- ♥ SSD Support

### Restoration Features

- ♥ Support for VHDX (Virtual Hard Disk Format)
- ♥ Supports EFI/UEFI systems as well as BIOS
- ♥ Easily restore files, folders, drives and disks
- ♥ Restoring onto different hardware (M.I.R.)
- ♥ Boot media is based on Windows 7
- ♥ Direct restoration from virtual disks (VHD)

### Tools

- ♥ Command line function
- ♥ High-performance compression (LZNT1 and BZIP2)
- ♥ Encryption of images (AES)
- ♥ Create a boot CD from the program itself
- ♥ Even simpler and quicker user interface
- ♥ High-performance compression and encryption of images
- ♥ Support for dynamic and GPT volumes
- ♥ Exclude certain files and/or file types
- ♥ Mount ISO file as a drive
- ♥ Check drives and images for errors
- ♥ Works with Microsoft Virtual PC Disks (VHD)
- ♥ Supported File Systems: NTFS/FAT32/FAT
- ♥ Advanced report management and e-mail notifications
- ♥ Live Update: Automatic Updates to current Program Versions

♥ **Supports Windows® 11 & 10 to Windows® Server 2025**