

Master your systems before problems arise

When Windows no longer starts, every minute counts.

O&O BlueCon 24 provides a powerful, bootable rescue environment for analyzing, repairing, recovering data from, and restoring Windows systems – regardless of whether the installed Windows system is still functional.

Whether for a private home PC, a company computer, service technician use, site management, or an international IT infrastructure: with its new edition and licensing model, O&O BlueCon 24 now offers the right version for every use case.

O&O BlueCon is started directly from a bootable medium, such as a USB stick. This gives you access to systems that no longer boot, are damaged, or can no longer be used normally due to faulty updates, driver problems, malware, deleted files, or forgotten passwords.

New Licensing Model with New Editions

O&O BlueCon 24 now offers clearer and more flexible licensing. The new editions are tailored to different target groups and usage scenarios – from a single private PC to worldwide enterprise deployment.

Available editions:

- O&O BlueCon 24 Personal Edition
- O&O BlueCon 24 Corporate Edition
- O&O BlueCon 24 Technician Edition
- O&O BlueCon 24 Site Edition
- O&O BlueCon 24 Enterprise Edition

This means users, administrators, service providers, and companies receive exactly the license that matches their area of use.

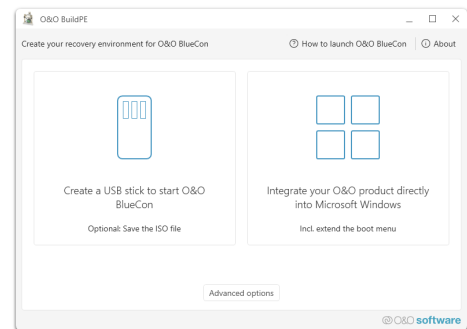
Automatically Updated O&O BlueCon Environment

When created, the O&O BlueCon environment is now automatically updated to the latest available version. The latest available Windows RE image from Microsoft is always used.

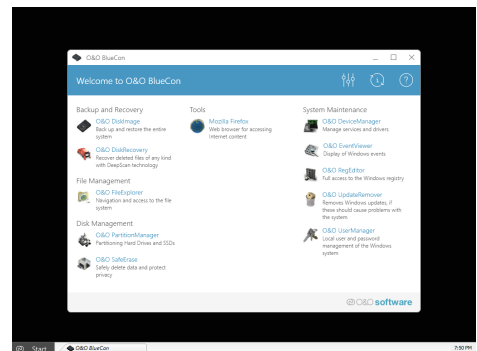
This offers key advantages:

- Creation with an up-to-date Windows Recovery image
- Higher compatibility with current Windows systems
- More reliable creation of the boot medium
- Can also be used if the local Windows Recovery environment is damaged or faulty
- Up-to-date basis for repair, analysis, and recovery

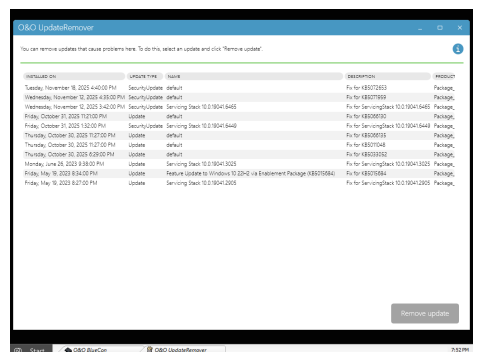
This makes O&O BlueCon 24 even more robust, current, and reliable in critical emergency situations.



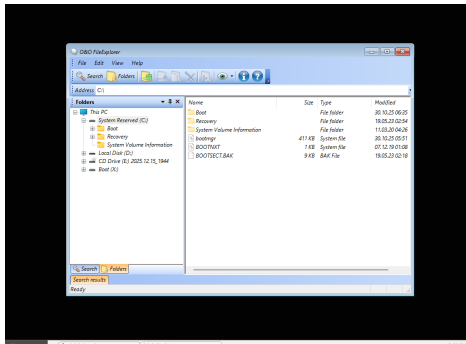
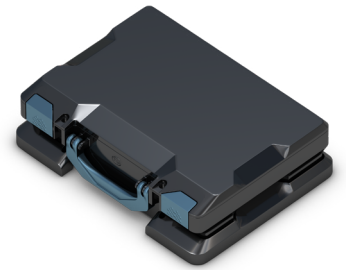
O&O BlueCon erstellen



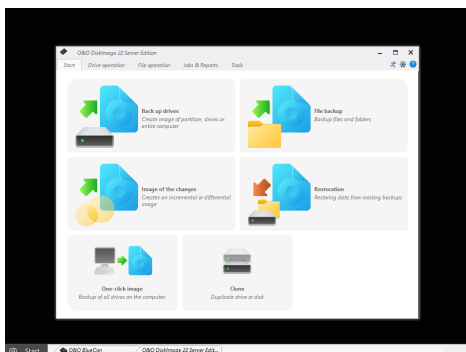
Mainview - O&O BlueCon Assistant



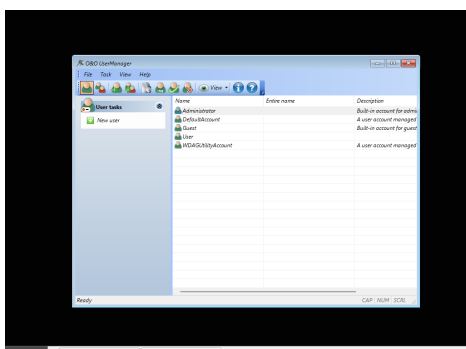
O&O UpdateRemover



O&O FileExplorer



O&O DiskImage



O&O UserManager

The O&O BlueCon Assistant

The O&O BlueCon Assistant provides quick access to the most important functions of the rescue environment.

Instead of clicking through numerous menus, users can access central tasks directly via a clear and structured interface. This saves time and provides orientation, especially in emergency situations.

The assistant supports, among other things:

- System analysis
- Repair of damaged Windows installations
- Data recovery
- User management
- Data backup
- Drive and partition management
- Removal of faulty updates
- Access to important system tools

Typical Use Cases

O&O BlueCon 24 supports many critical situations in private, professional, and enterprise-wide use.

Windows No Longer Starts

A damaged boot process, faulty system files, or defective services can prevent Windows from starting. O&O BlueCon enables access to the system without loading the installed Windows system.

Problems After Windows Updates

Not every update runs smoothly. If a Windows update causes crashes, startup problems, or system instability, O&O BlueCon helps with analysis and with removing problematic updates.

Faulty Drivers or Hardware Changes

Driver problems are among the most common causes of non-booting systems. With O&O BlueCon, faulty drivers or services can be identified and disabled.

Forgotten Windows Passwords

With O&O BlueCon's user management, local user accounts can be managed and forgotten passwords can be reset.

Recover Deleted Files

O&O DiskRecovery scans storage media for files that were accidentally deleted or lost due to software errors and helps recover important data.

Back Up Data from Damaged Systems

If a system no longer starts, important data can be copied to external storage media using the integrated file manager.

O&O BlueCon 23



Securely Delete Sensitive Data

With O&O SafeErase, files, partitions, or entire drives can be securely deleted so that recovery with specialized software is prevented.

System Migration and Transfer

Depending on the edition, O&O BlueCon also supports scenarios for backing up, restoring, and transferring system environments.

IT Service and Customer Use

With the Technician Edition, O&O BlueCon is also available for flexible use by IT service providers and support teams.

Site and Enterprise Use

The Site and Enterprise Editions enable use on many systems within one site or across the entire company.

Everyday Solutions with O&O BlueCon 24

O&O BlueCon is not only suitable for acute emergencies, but also for recurring tasks in maintenance, support, and IT operations.

Typical tasks:

- Backup and recovery of complete systems
- Analysis and repair of damaged Windows installations
- Handling driver and service problems
- Diagnosis and repair of drives
- Management of local user accounts
- Resetting forgotten passwords
- Secure deletion of sensitive data
- Recovery of deleted files
- Removal of problematic Windows updates
- Access to system files and the registry
- Management of partitions and storage media
- Preparation of rollouts and recovery scenarios

Edition Comparison

Personal Edition

For home users and one private PC. Includes the most important rescue, repair, diagnostic, and recovery functions. Without O&O DiskImage, without Active Directory, and without deployment functions.

Corporate Edition

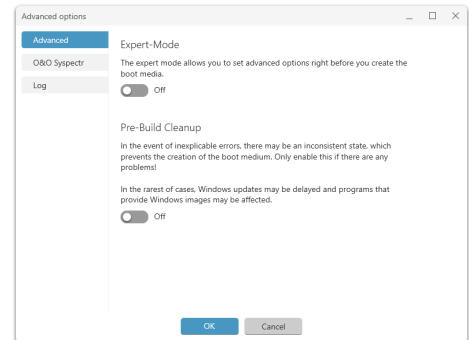
For one business PC within a company. Includes O&O DiskImage and Active Directory support. Ideal for professional system rescue and backup on a company computer.

Technician Edition

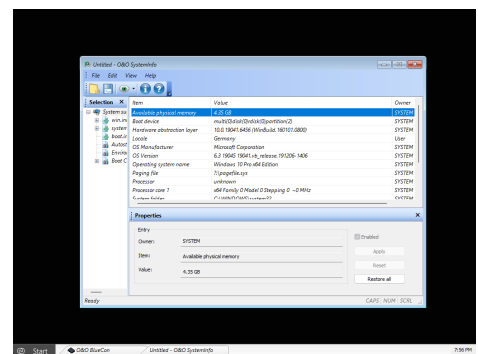
For IT technicians, service providers, and support teams. Licensed per technician. Suitable for multiple systems and customer use. Includes O&O DiskImage, Active Directory, and deployment functions.

Site Edition

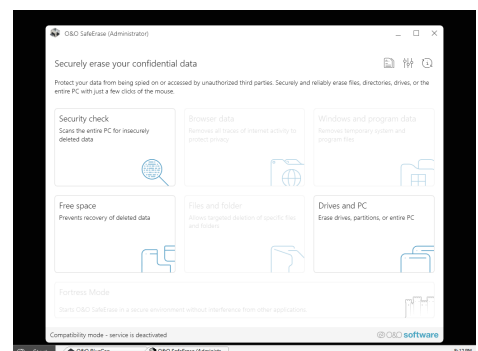
For all PCs at one company site. Ideal for central IT departments, maintenance, recovery, and rollouts. Includes O&O DiskImage, Active Directory, and deployment functions.



O&O BuildPE - Advanced options

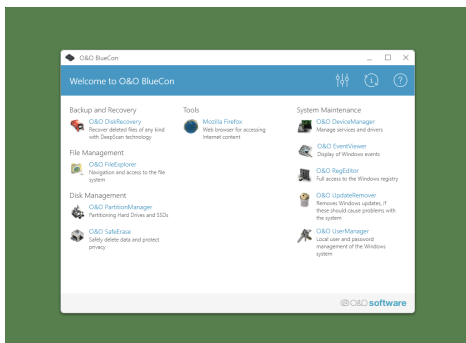


O&O SystemInfo

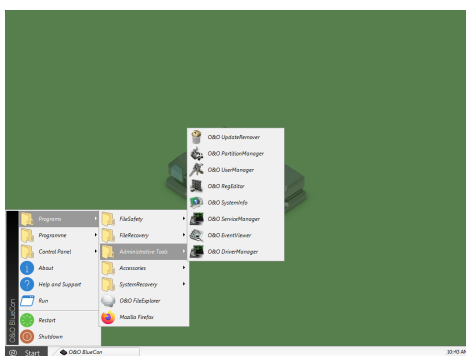


O&O SafeErase

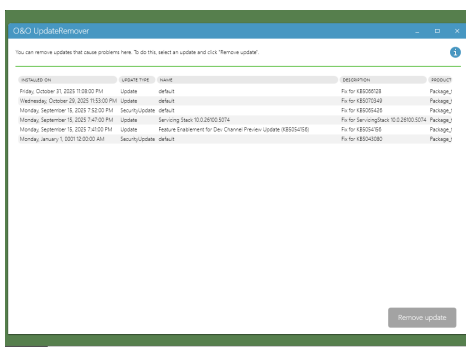
O&O BlueCon 23



O&O BlueCon Personal Edition - Start



O&O BlueCon Personal Edition - Programs



O&O BlueCon Personal Edition - O&O UpdateRemover

Enterprise Edition

For large companies with multiple sites. Company-wide use without site restrictions. Includes O&O DiskImage, Active Directory, and deployment functions.

Which Edition Is Right for You?

For Home Users

If you want to use O&O BlueCon on a private PC at home, the Personal Edition is the right choice. You receive a powerful rescue environment for typical emergencies such as startup problems, data loss, deleted files, or forgotten local passwords.

For Companies with a Single PC

If you want to use O&O BlueCon professionally on a business PC, the Corporate Edition is suitable. It additionally includes O&O DiskImage and Active Directory support.

For IT Technicians and Service Providers

If you work as an IT professional on multiple systems or support customers, the Technician Edition is the right solution. It is licensed per technician and allows flexible use in different environments.

For Companies with One Site

If all PCs at one site need to be protected, repaired, and managed, the Site Edition is the right choice. It allows use on all systems within one site.

For Large Companies with Multiple Sites

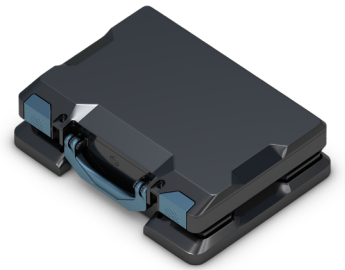
If O&O BlueCon is to be used company-wide and across multiple sites, the Enterprise Edition is the most comprehensive solution. It offers maximum flexibility for global IT structures.

O&O BlueCon 24

When Windows no longer starts, O&O BlueCon does.

O&O BlueCon 24 is the reliable rescue and maintenance environment for Windows systems – powerful, flexible, and suitable for every area of use.

Whether at home, in the company, at a customer site, at one location, or worldwide: with O&O BlueCon 24, you stay in control of damaged, non-booting, or at-risk Windows systems.



Overview of Functions and Programs Integrated in O&O BlueCon

O&O BlueCon is a comprehensive toolkit that provides essential tools and programs for IT maintenance, system rescue, data recovery, and administration directly from a boot medium. It can also be used when Windows is damaged, no longer starts, or can no longer be run normally.

All important tools are available in a central, Windows-based rescue environment. This allows systems to be analyzed, repaired, backed up, and restored without requiring installation on the affected computer.

Here is an extended overview of the integrated functions:

- **O&O DiskImage:** Professional data backup - Available in the Enterprise Edition and Enterprise-Tech Edition, supports complete system backups and restoration.
 - **O&O DiskRecovery:** Professional restoration of lost data, including comprehensive scanning methods to maximize data recovery.
 - **O&O SafeErase:** Ensures the secure destruction of all data on hard drives and memory cards, including state-of-the-art deletion methods.
 - **O&O Syspectr:** Comprehensive Remote Management – Enables real-time monitoring and management of systems, including proactive alerts and performance monitoring. Available in O&O Syspectr for Remote Disaster Recovery.
 - **O&O Check & Repair:** Diagnoses system startup problems and provides automatic repair options.
 - **O&O UpdateRemover:** Allows for the removal and uninstallation of problematic Windows updates.
 - **O&O PartitionManager:** Flexible management of hard disk layout, including creating, expanding, and reducing partitions.
 - **O&O FileExplorer:** Enables browsing, copying, and moving files and folders, even to external media.
 - **O&O DeviceManager:** Management of drivers and services, including enabling and disabling.
 - **O&O CheckDisk:** Checks hard drives for data and structural integrity.
 - **O&O EventViewer:** Efficient troubleshooting by displaying all system events.
 - **O&O RegEditor:** Direct access to the Windows registry for fine-tuning the system.
 - **O&O UserManager:** Manages local user accounts and settings.
 - **O&O SystemInfo:** Provides detailed information about system parameters and configurations.
 - **O&O Notepad:** For displaying and editing text files.
 - **O&O Calc:** Offers basic arithmetic operations and supports conversion between numbering systems.
 - **Microsoft PowerShell:** Direct input and execution of commands for advanced users.
 - **System Settings:** Access to network settings, operating system selection, driver loading, and more.
 - **Web Browser (Firefox®):** Access to the World Wide Web for research and downloads.
 - And much more...
- **Supports Windows® 10, 11 to Windows® Server 2022 (all Editions)**
 - **To create the start environment, O&O BuildPE requires Windows® 11, 10, Windows® Server 2019, or Windows® Server 2022 or Windows® 2025 (all Editions)**

O&O Software: Quality „Made in Germany,“ Developed in Berlin