



Master your systems before problems arise

O&O BlueCon provides IT administrators with a powerful and secure environment for analyzing, repairing, and restoring Windows systems. Whether data recovery, password reset, or system repair – all essential tools are available directly and without a running Windows system. This minimizes downtime, enables rapid system recovery, and ensures reliable IT operations.

Cost-Efficiency and Convenience

O&O BlueCon can be launched directly from a boot medium such as a CD/DVD or USB stick, without the need for a functioning Windows system. This prevents data loss that could occur during a reinstallation and simplifies usage by integrating all necessary programs into one solution.

The O&O BlueCon Assistant

The O&O BlueCon Assistant offers direct and easy access to all the essential features of the program. This saves time and provides a quick overview of the available tools, eliminating the need to navigate through complex menus.

Example scenarios where O&O BlueCon provides support:

- ▶ Repair after incorrect driver installations or hardware changes
- ▶ Windows startup problems without an apparent reason
- ▶ Issues due to faulty Windows updates
- ▶ Forgotten Windows passwords
- ▶ Data protection-compliant system changes
- ▶ Transfer of system environments to new computers
- ▶ Recovery of accidentally deleted files
- ▶ Removal of malicious code

Daily solutions with O&O BlueCon:

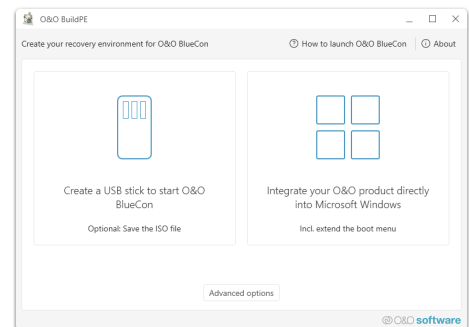
- ▶ Backup and restoration of complete systems
- ▶ Resolution of driver issues and services
- ▶ Diagnostics and repair of drives
- ▶ User management and resetting of forgotten passwords
- ▶ Secure deletion of data
- ▶ Recovery of deleted files

System repair with O&O Check & Repair

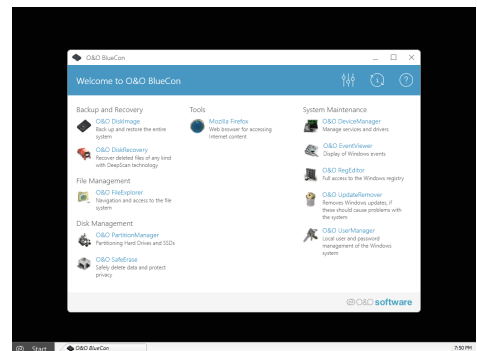
O&O Check & Repair, integrated into O&O BlueCon, identifies the reasons why a system does not start. The „Check“ step analyzes system files and components for missing or damaged files and registry keys. „Repair“ then attempts to automatically correct these issues. If necessary, O&O BlueCon provides advanced solutions and log files.

Start Directly from the Boot Medium

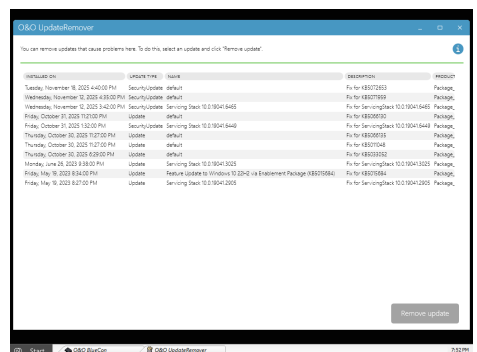
O&O BlueCon allows all programs and functions to be started directly from the bootable medium, without the need for installation - even if Windows is damaged or won't start. The intuitive user interface ensures easy handling of the integrated tools without extensive training.



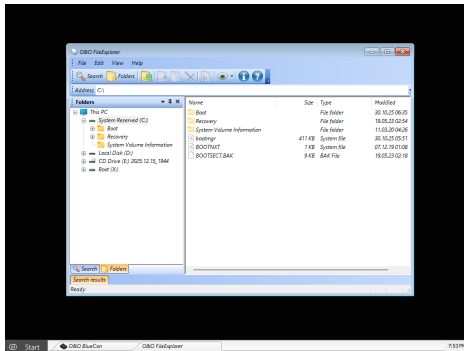
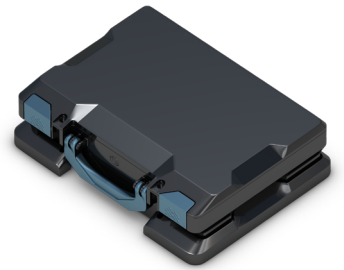
O&O BlueCon erstellen



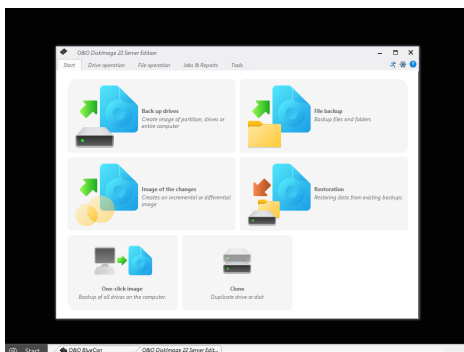
Mainview - O&O BlueCon Assistant



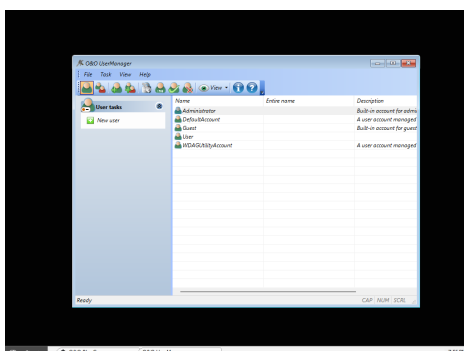
O&O UpdateRemover



O&O FileExplorer



O&O DiskImage



O&O UserManager

Professional Data Recovery with O&O DiskRecovery

O&O DiskRecovery searches hard drives, memory cards, or USB sticks for accidentally deleted or software-error-lost data and recovers it. Every sector is thoroughly checked for potentially lost files.

Easy Disk Management with O&O PartitionManager

O&O PartitionManager facilitates the creation, deletion, enlargement, and reduction of partitions. It also allows for the resizing of the system partition and optimizes the arrangement of files for efficient use of storage space.

Secure Data Deletion with O&O SafeErase

O&O SafeErase ensures reliable deletion of sensitive data and complete drives, making data recovery impossible even with specialized software. Thanks to five different deletion methods, data can be overwritten up to 35 times, ensuring maximum security.

Access to the Computer Without an Administrator Password

With O&O BlueCon's user management, you can access all registered user accounts and reset forgotten passwords with just a few clicks. The user can then log in with the new password without knowing the old one.

Data Backup from Damaged Windows

Back up your data from a damaged system to external storage without having to write to the system itself. This prevents data loss. Use the O&O BlueCon FileExplorer to access all drives and their contents.

Efficient Data Backup with O&O DiskImage

O&O DiskImage enables complete backup and restoration of data on hard drives, SSDs, or external storage media. This powerful software creates precise images of your drives for quick and hassle-free restoration in case of data loss or system failure. Available exclusively in the O&O BlueCon Enterprise Edition and O&O BlueCon Enterprise-Tech Edition, O&O DiskImage is an indispensable tool for professional IT environments and technicians who demand the highest standards of data security and recovery quality.

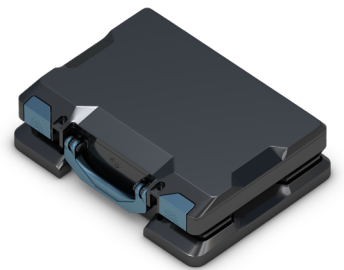
Editing the Registry with O&O BlueCon

The registry is crucial for the operation and customization of Windows, as it stores all system and user settings. Invalid or incorrect entries can lead to serious system problems. O&O BlueCon offers powerful tools for safely modifying or repairing registry entries to ensure system stability.

Integration into the Windows Recovery Environment

O&O BlueCon is seamlessly integrated into the Windows operating system and can be launched directly from the Windows recovery environment, even if the main operating system won't boot. This makes O&O BlueCon an indispensable toolkit for emergencies, ready to use around the clock.

O&O BlueCon 23



Uninstalling Windows Updates with O&O UpdateRemover

With O&O UpdateRemover, you can easily uninstall unwanted or problematic Windows updates. This feature extends far beyond the standard options of Windows by providing a comprehensive list of all installed updates and allowing the removal of specific updates, even if the Windows recovery environment is not available.

Different Editions

O&O BlueCon offers a comprehensive array of tools and features for system restoration, data recovery, and system maintenance. Each edition is tailored to specific user groups and requirements:

O&O BlueCon 23 Admin Edition

The Admin Edition is designed for IT administrators who use O&O BlueCon exclusively within their own organization. It offers all essential functions for system recovery, diagnostics, and Windows repair – ideal for internal IT operations.

O&O BlueCon Admin Edition Plus incl. O&O DiskImage Deployment

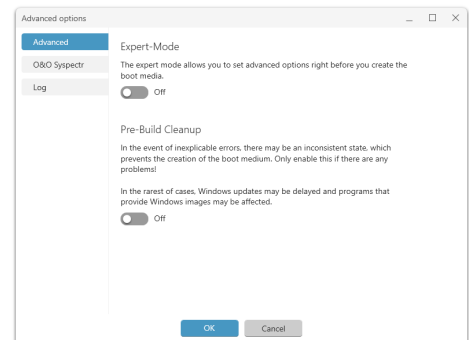
This add-on module enhances the Admin Edition with professional imaging, backup, and recovery capabilities. It allows administrators to create reliable system and data images, further increasing the protection of their IT infrastructure.

O&O BlueCon 23 Tech Edition

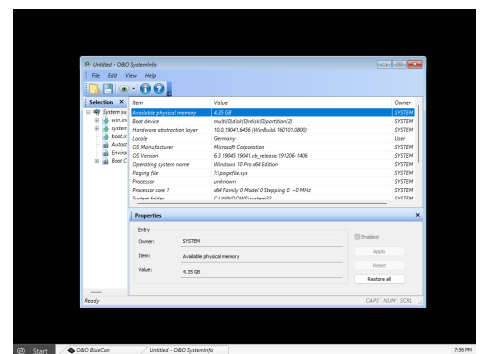
The Tech Edition is designed for IT service providers and support teams who use O&O BlueCon both within their own organization and at customer sites. It offers the same powerful features as the Admin Edition but with extended usage rights for professional customer support.

O&O BlueCon Tech Edition Plus incl. O&O DiskImage Deployment

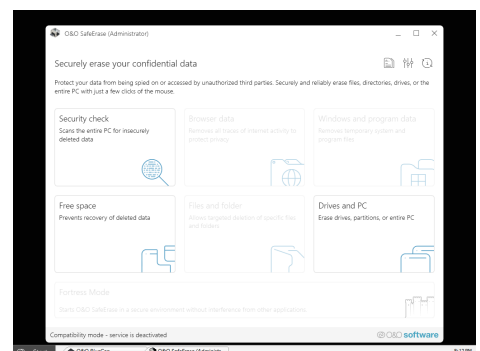
This package expands the Tech Edition with comprehensive backup and imaging functions that may also be used in customer environments. It enables service providers to secure, restore, and effectively protect systems – both internally and in external projects.



O&O BuildPE - Advanced options



O&O SystemInfo



O&O SafeErase

O&O BlueCon 23



Overview of Integrated Features and Programs in O&O BlueCon

O&O BlueCon is a comprehensive toolkit that provides essential tools and programs for IT maintenance and restoration directly from a boot medium. It can also be used when Windows is damaged or non-executable. Here's an expanded overview of the integrated features:

- ▀ **O&O DiskImage:** Professional data backup - Available in the Enterprise Edition and Enterprise-Tech Edition, supports complete system backups and restoration.
- ▀ **O&O DiskRecovery:** Professional restoration of lost data, including comprehensive scanning methods to maximize data recovery.
- ▀ **O&O SafeErase:** Ensures the secure destruction of all data on hard drives and memory cards, including state-of-the-art deletion methods.
- ▀ **O&O Syspectr:** Comprehensive Remote Management – Enables real-time monitoring and management of systems, including proactive alerts and performance monitoring. Available in O&O Syspectr for Remote Disaster Recovery.
- ▀ **O&O Check & Repair:** Diagnoses system startup problems and provides automatic repair options.
- ▀ **O&O UpdateRemover:** Allows for the removal and uninstallation of problematic Windows updates.
- ▀ **O&O PartitionManager:** Flexible management of hard disk layout, including creating, expanding, and reducing partitions.
- ▀ **O&O FileExplorer:** Enables browsing, copying, and moving files and folders, even to external media.
- ▀ **O&O DeviceManager:** Management of drivers and services, including enabling and disabling.
- ▀ **O&O CheckDisk:** Checks hard drives for data and structural integrity.
- ▀ **O&O EventViewer:** Efficient troubleshooting by displaying all system events.
- ▀ **O&O RegEditor:** Direct access to the Windows registry for fine-tuning the system.
- ▀ **O&O UserManager:** Manages local user accounts and settings.
- ▀ **O&O SystemInfo:** Provides detailed information about system parameters and configurations.
- ▀ **O&O Notepad:** For displaying and editing text files.
- ▀ **O&O Calc:** Offers basic arithmetic operations and supports conversion between numbering systems.
- ▀ **Microsoft PowerShell:** Direct input and execution of commands for advanced users.
- ▀ **System Settings:** Access to network settings, operating system selection, driver loading, and more.
- ▀ **Web Browser (Firefox®):** Access to the World Wide Web for research and downloads.
- ▀ And much more...
- ▀ **Supports Windows® 10, 11 to Windows® Server 2022 (all Editions)**
- ▀ **To create the start environment, O&O BuildPE requires Windows® 11, 10, Windows® Server 2019, or Windows® Server 2022 or Windows® 2025 (all Editions)**

O&O Software: Quality „Made in Germany,“ Developed in Berlin

All O&O Software products are created in Berlin. Customer satisfaction is particularly important to us. We understand the immense importance of your data and are committed to protecting and maintaining it. With O&O Software, you choose solutions developed with the utmost care and expertise „Made in Germany.“