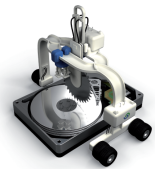


O&O PartitionManager 3

Professional Edition



Reliable management of your hard disk

Whenever there's a chance of system error or a system crash occurring, a hard disk split into partitions can contribute decisively to successful data recovery or restoration of individual partitions (along with content). The O&O PartitionManager enables you to split your hard disk into partitions, move them, change their size, and much more. Clean up the mess and create space where you really need it.

More security through disk partitioning

By organizing your hard disk into several partitions you will, for example, be able to separate your documents from programs. The division into two partitions has proven to be the best solution: one system partition containing all Windows and software files, and a data partition with all your personal and business files, such as photos, videos and office documents. We recommend creating periodic images of your data partitions using O&O DiskImage: this way you'll be able to quickly access your data after a system crash or sudden data loss. All your data can be preserved along with any modifications. In addition, you can image your system partition separately, before installing new programs or loading new drivers.

Modifying the system partition with the help of the Start CD

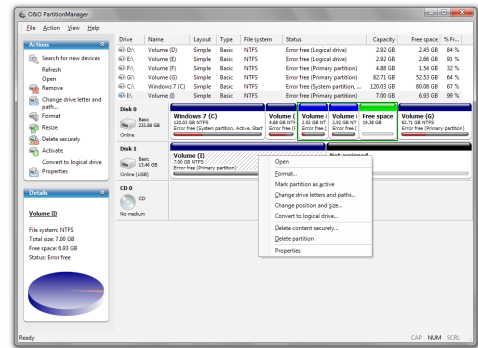
Usual disk management programs only offer limited possibilities to change system partitions. Many require you to restart your computer and work in the Native Mode, since processes usually work without user interactions. The Start CD of the O&O PartitionManager is based on Windows PE. This enables you to comfortably extend, shrink or move system partitions regardless of their data volume and file system quickly and simply.

Supports all disk types

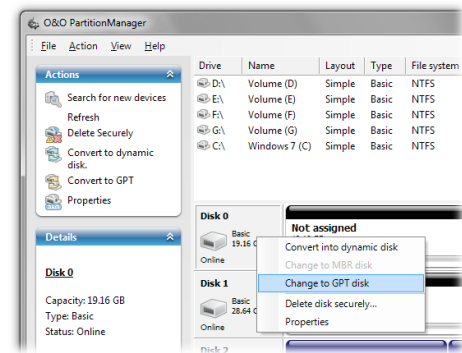
O&O PartitionManager places comprehensive disk support as a foundation for professional-level disk management. The program recognizes and supports basic disks, dynamic disks, as well as removable drives, USB sticks and memory cards. This enables you to create various disk types and convert them from one form to another. You can, for instance, convert a basic disk into a dynamic volume, and change from one layout to another (MBR and GPT). The integrated technologies, O&O Safe-Erase and O&O Defrag, increase overall security and maximize your server performance.

Delete data securely

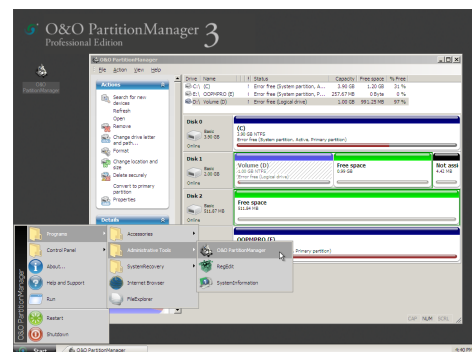
Whenever you delete data, they become "invisible" to your system. However, your data still exist on your hard disk. You should be especially cautious, if you want to give away or sell your computer. If you really want to make sure that your data is irrevocably deleted, use O&O Safe-Erase, the integrated deletion application. Data deleted with the help of this tool cannot be restored, even with special data rescue software.



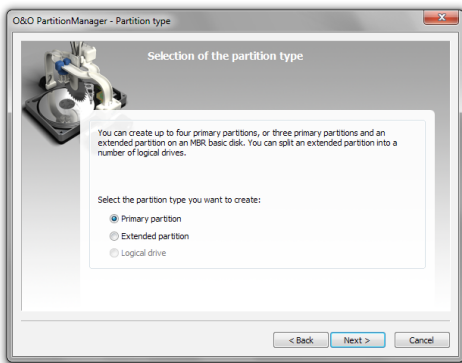
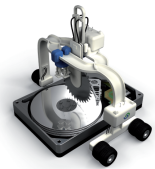
Start Page under Windows



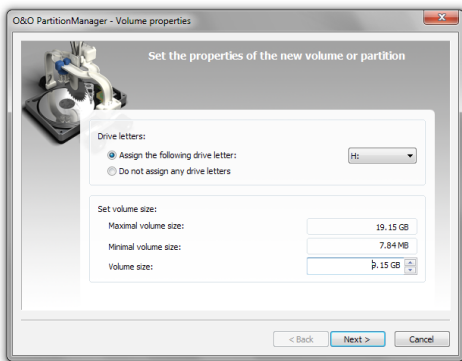
Change to GPT disk



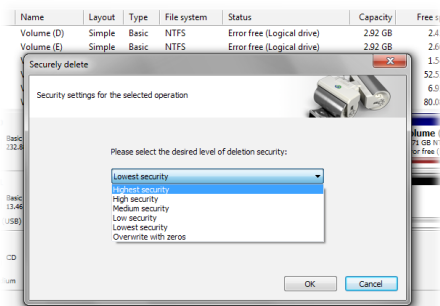
Starting O&O PartitionManager without an operating system



Selection of the partition type



Set the properties of the new volume of partition



Security settings

Shrink partition to minimal size

To effectively shrink a partition, run an optimization before continuing with the modification. Files will be moved physically to the "front" of the volume, which increases the distance of the last file to the end of the volume. This results in the maximum shrinking level. Optimization is based on the technology of our multiple award-winning defragmentation program O&O Defrag.

Made in Germany. Made in Berlin.

All O&O products are developed and perfected in Berlin, Germany. We listen to the concerns of our customers, because we know how important their data is for them. And we've been doing that now for over ten years!

Product Features:

- Create, delete, extend, and shrink partitions
- Supports all disks types, also MBR, dynamic, and GPT disks
- NEW: Convert logical and primary partitions
- Includes leading technologies from O&O Defrag and O&O SafeErase
- Enhanced usability
- Start CD based on Windows, including system rescue tools
- NEW: detailed display of disk and volume properties
- NEW: Display of S.M.A.R.T. data of disks with information on surface errors.

System Requirements:

- Minimum requirements of the respective operating system
- 1 GB RAM recommended (for Start CD)
- 20 MB free hard disk space
- 32 Bit/64 Bit support
- Windows® 7, Vista®, XP and 2000 Pro (all Editions)