



O&O DriveLED 4

Professional Edition



An early-warning system for hard disk crashes

When is it the right time for giving your computer a rest? When it's too hot? Overloaded? Vital components are on the verge of breaking down? No other single part of the modern computer system is more susceptible to malfunction than the hard disk. In fact, such a malfunction can come without warning and is often unavoidable. With O&O DriveLED 4, however, you now have the ability to recognize a potential malfunction before it happens.

You can detect impending crashes while they're on their way

O&O DriveLED gives you the chance to recognize when a crash is coming, and then the opportunity to do something about it. You'll have enough time to backup your data and so avoid losing any of it when exchanging a hard disk. This is time a sudden crash will otherwise never give you.

S.M.A.R.T. hardware monitoring

O&O DriveLED uses the S.M.A.R.T. (Self-Monitoring, Analysis and Reporting Technology) integrated in hard disks to permanently monitor the status of drives. This allows the program to readout the values for essential properties that are detected by the hard disk during a self-diagnosis. Some of these values might be the total number of hours in operation or the read error rate. Over the course of time, the values will deteriorate and are an indication that the hard disk is wearing out. A detailed readout keeps you informed about the most important data on your hard disk: everything from the number of previous system starts up to the current temperature. In this way, O&O DriveLED warns you about impending problems.

Analyze the status of your drives

On the user interface of O&O DriveLED, each drive is symbolized by a colored lamp. Each of these LEDs will show you the latest status of any particular drive. Depending on the status, the LEDs will display a different color:

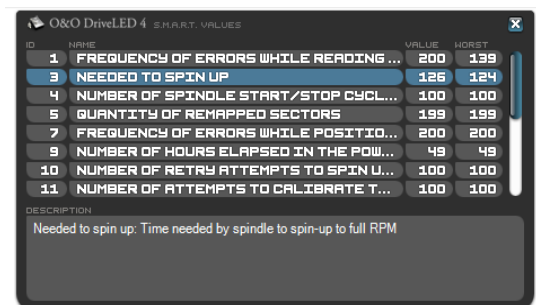
- Blue - no activity to report
- Green - reading access on the partition
- Red - data is being written on the partition
- Yellow - data is being simultaneously written and read



1. Symbol for a hard disk
2. Symbol for a drive/partition
3. Storage capacity of the drive
4. Temperature of the respective hard disk
5. USB hard disk



Hard disk properties



S.M.A.R.T. information about hard disk



Drive activity



O&O DriveLED 4

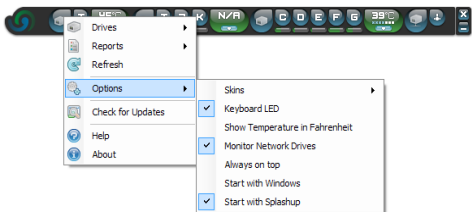
Professional Edition



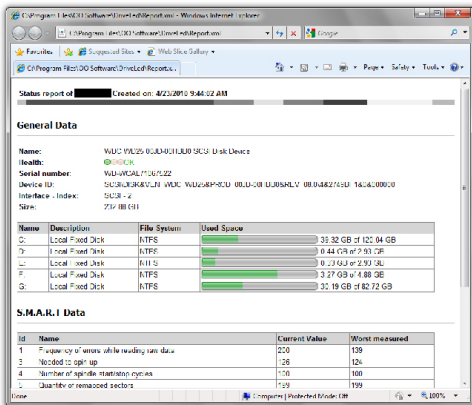
Critical temperature



S.M.A.R.T.-Error (red LED), temperature is in order



Right-click menu – settings



Status report

Differences between Editions

Starting with version 4, O&O DriveLED is available in three different Editions. The Professional Edition can monitor the drives on a desktop computer. It cannot be used on server operating systems and contains no interfaces for network management. The Workstation and Server Editions have interfaces for controlling O&O DriveLED across a network. Together with O&O Enterprise Management Console, it's possible to identify impending crashes on network computers. The Workstation Edition can only be used on desktop computers, the Server Edition on both desktop and server systems.

Made in Germany. Made in Berlin.

All O&O products are developed and continually perfected in Berlin, Germany. We listen to the concerns of our customers, because we know just how important their data is for them. And we've been doing this now for over ten years!

Features at a glance

- NEW: Redesigned user interface
- NEW: Also available in Workstation and Server Editions
- NEW: Status reports
- Displays read/write access for logical volumes
- Displays storage capacity for every drive
- Automatic monitoring of all S.M.A.R.T. properties
- Displays current temperatures on all hard disk drives (when supported by manufacturer)
- Warning of possible operational errors on all hard disk drives
- Supports all Windows-compatible disks
- Support of SCSI-disk drives
- Monitors network drives

System requirements

- Minimum requirements of the respective operating system
- 32/64-bit support
- 15 MB free hard disk space
- Windows® 7, Vista®, XP (all Editions)