

O&O DiskImage 12

Professional Edition



Maximum data security!

Backing up data on a regular basis is still something that many users prefer to avoid. At least that is until they suffer their first loss of important data as a result of software, hardware or user error: that's when it becomes crystal clear just how valuable a reliable and up-to-date backup really is. O&O DiskImage supports Windows 7, 8, and 10.

Image entire PCs, individual drives or files

The most reliable way to protect yourself against data loss is if you make regular backups of your data and the operating system and store it on an external storage medium. When backing up your PC, O&O DiskImage saves both personal files as well as drive information and individual settings. This not only protects irreplaceable files, such as family photos, vacation videos and office documents, but you also save yourself in the event of a crash the lengthy set up and reinstall of all the programs and the Windows operating system.

Regular images are a must

To make sure your backups are always up to date, we recommend that you perform regular backups at short intervals. You can automate this with O&O DiskImage, so that your data is backed up say once a week, for example, automatically and in the background.

Quick and easy restoration

If you have backed up individual drives, you can easily restore them over the user interface of O&O DiskImage under Windows. To restore an entire PC or the system partition you can run O&O DiskImage without installation directly from the boot media.

Machine independent restoration

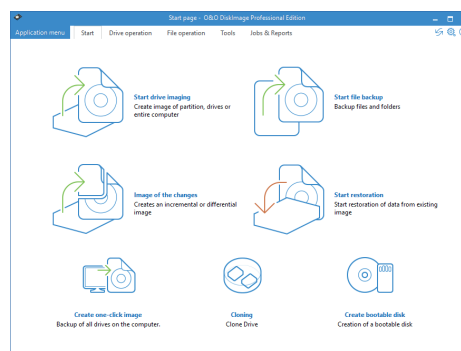
The M.I.R. (Machine Independent Restoration) feature allows you to also restore or duplicate an entire PC or system partition on a computer whose hardware is different from the original machine, for instance, where you have changed hardware components on the target machine, or have bought a brand new PC and want to restore an old image onto it.

Restore files and folders

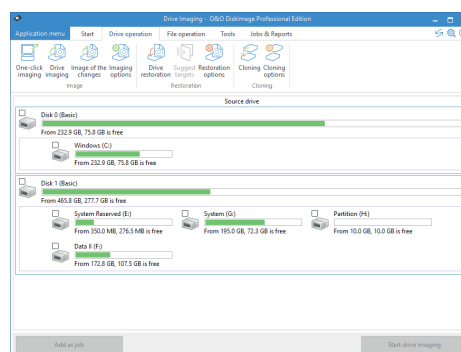
For restoring file backups, that only include files and folders, you can use most popular compression tools such as WinZIP - entirely independent from the O&O DiskImage program.

Plug-and-play function

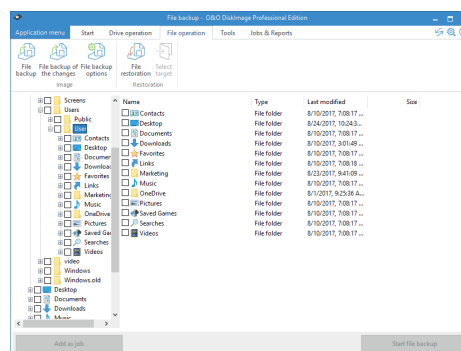
Thanks to the integrated plug-and-play option, selected files and folders can be backed up automatically as soon as, for example, an external hard disk is connected to the computer. This is ideal for users who forget to carry out regular backups or who don't want to go through the trouble. Once configured, the auto backup function runs by itself.



Startpage: O&O DiskImage

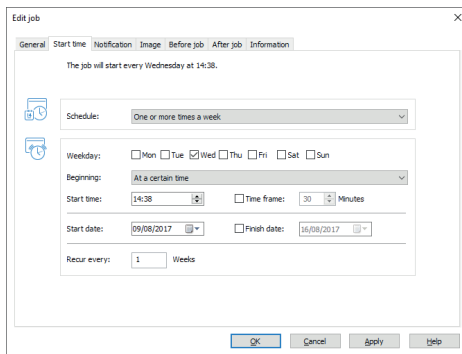


Select drive for imaging

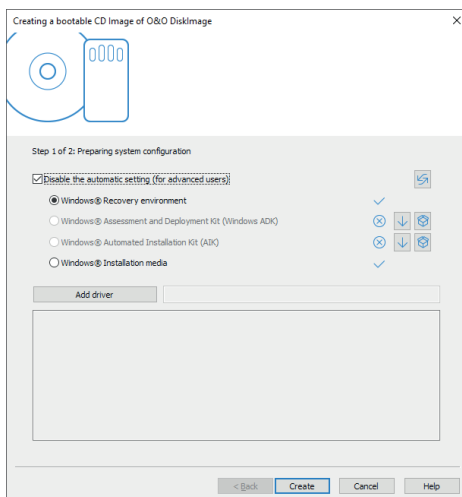


File Backup

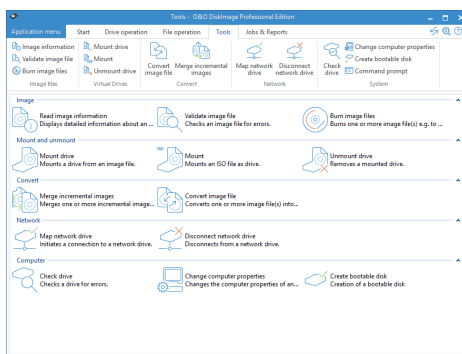
O&O DiskImage 12 Professional Edition



Job assistant with schedule



Create bootable disk



Tools

Features

- ♥ Command line function
- ♥ Live Update function
- ♥ File-based backup: image files up to 5 times quicker
- ♥ Trigger multiple tasks with portable devices (plug and play)
- ♥ Driver integration when creating a boot medium
- ♥ Driver integration when using a boot medium
- ♥ Direct creation of VHDs
- ♥ Simplified wizard for creating and modifying jobs
- ♥ Creating jobs with the Windows Task Scheduler
- ♥ Image an entire computer with the push of a button
- ♥ Image system and data drives
- ♥ Clone drives and entire disks
- ♥ Image only used sectors
- ♥ Incremental/differential images: backup only the changes
- ♥ Save images to network drives
- ♥ Time Schedule for automatic, regular images
- ♥ Advanced burning on CD/DVD/Blu-ray
- ♥ Supports EFI/UEFI systems as well as BIOS
- ♥ Supported File Systems: NTFS/FAT32/FAT
- ♥ Easily restore files, folders, drives and disks
- ♥ Restoring onto different hardware (M.I.R.)
- ♥ Boot media contains extra system rescue tools
- ♥ Direct restoration from virtual disks (VHD)
- ♥ Start a job by connecting a device
- ♥ Create a boot CD from the program itself
- ♥ Even simpler and quicker user interface
- ♥ High-performance compression and encryption of images
- ♥ Support for dynamic and GPT volumes
- ♥ Exclude certain files and/or file types
- ♥ Check drives and images for errors
- ♥ Advanced report management and e-mail notifications
- ♥ Live Update: Automatic Updates to current Program Versions

Made in Germany. Made in Berlin.

All O&O products are developed and serviced in Berlin. We at O&O are proud of our German heritage, and proud to represent the quality, security and satisfaction long associated with products "Made in Germany". We take the concerns of our customers very seriously because we know just how important their data is for them. For further information, please visit our website: www.oo-software.com

System Requirements

- ♥ Windows® 10, 8 and 7 (all Editions)
- ♥ An internet connection is required to download the latest program components and to create a boot medium